

*Quality yachts since 1919*

*Milele* Milele



ROYAL  
**HAKVOORT**  
SHIPYARD

Havenstraat 22, 1141 AX Monnickendam, The Netherlands  
Phone +31 (0)299 651403 • [www.hakvoort.com](http://www.hakvoort.com) • [sales@hakvoort.com](mailto:sales@hakvoort.com)



ROYAL  
**HAKVOORT**  
SHIPYARD

## Milele



"Milele is an complex 45.2-metre superyacht built for a discerning owner with a diligent eye for detail. She's incredibly lightweight and nimble, capable of reaching speeds up to 25.5 knots. Her hybrid propulsion system delivers a full electric cruising speed of 8 knots.

Milele also represents our first Fast Displacement Planning Hull with carbon Hull Vane spoiler."

Her design by Omega Architects is well-balanced and takes a unique departure from yachts that offer similar speeds.

The exterior lines are sinuous, athletic and deeply inspired by fast automobiles. Characterised by dropped bulwarks, an angular bow and an enclosed stern, Milele makes no secret of her impressive performance.

Step aboard and Milele boasts an impressively large volume and an interior design finished with a palette of natural tones, creams and whites. Exceptional features include a multifunctional foredeck with a custom U-Boat Wox submersible stowed in the bow and an outdoor cinema.



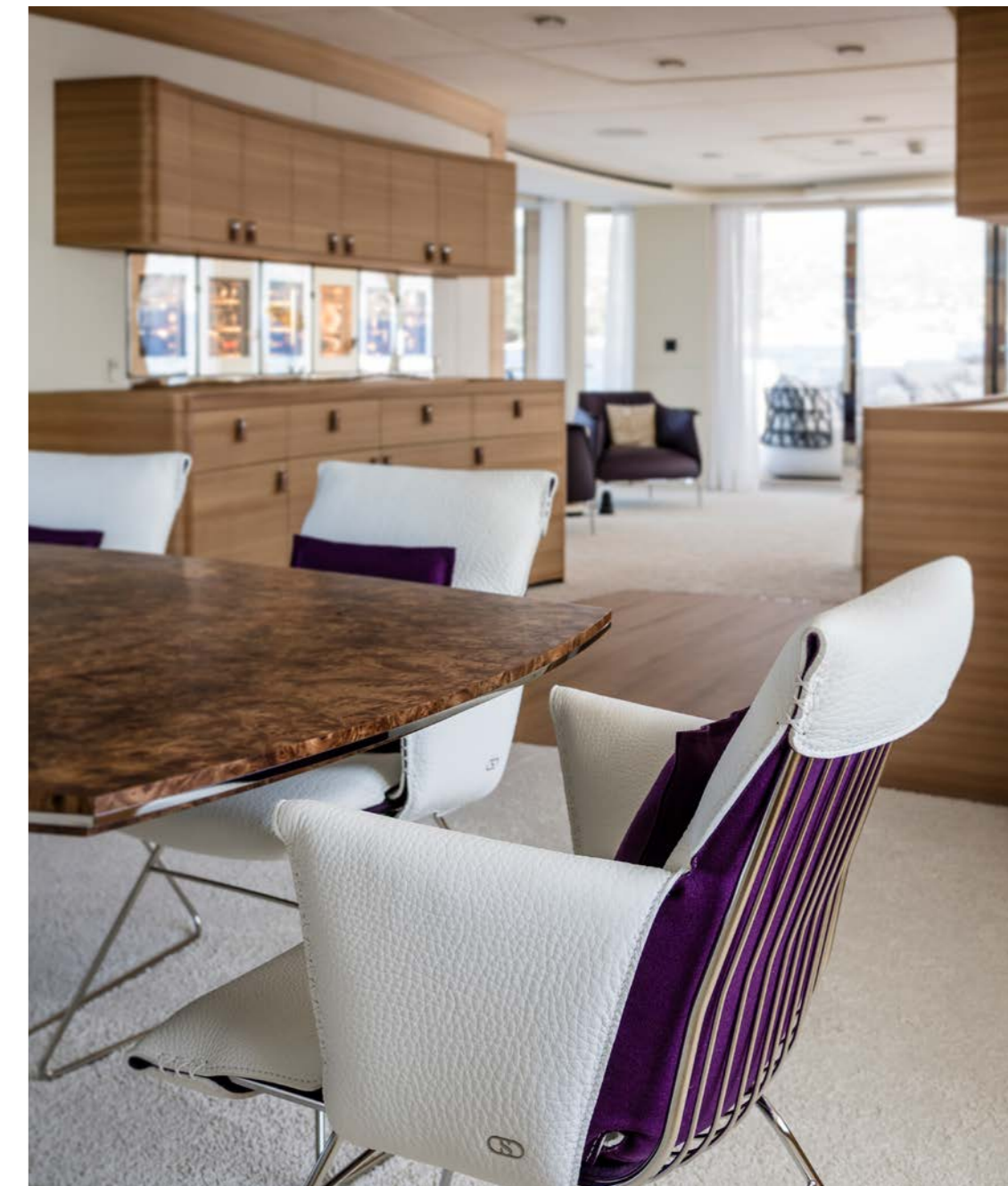




Incorporating a calming interior design characterised by crisp linen whites, an abundance of de Sede fabrics, and a palette of rich timbers spanning various shades and tones, Milele defines understated elegance. The hallmark of this design is her large picture windows that envelop her social spaces and VIP cabins, illuminating the interior with a cascade of natural light and providing panoramic vistas from virtually every vantage point on board.

Milele boasts an open-plan, free-flowing arrangement that seamlessly unites not only the interior with the exterior but also interconnects each room harmoniously.

Distinctive concave cabinetry, featuring an integrated wine cooler, bridges the gap between formal dining and convivial relaxation. Designed with the entire family in mind, she accommodates multiple lounges and hosts numerous conversational areas, creating an inviting environment for shared moments and tranquil repose. Milele stands as a testament to the fusion of sophisticated aesthetics with practical functionality.



# Interior

Milele



# Accommodation

## Milele



Boasting four sumptuous staterooms, Milele graciously accommodates up to eight guests. The owner's suite, positioned forward on the main deck, epitomises luxury with its accompanying study, sophisticated glass and marble en suite bathroom, and a private sea terrace that unfolds to starboard. Infused with chic and contemporary styling, the master suite emanates a tranquil ambience, offering a serene retreat.

Diverging from the conventional fourth stateroom layout, Milele surprises with a stunning gym featuring an undulating sculpted wall—a veritable piece of art in itself.

The three remaining staterooms, marked by their generous proportions, adhere meticulously to the vessel's overarching styling.

Hand-picked artworks inject vibrant pops of colour, while minimalist design elements accentuate the natural grain patterns of the varnished veneers, creating a striking visual harmony throughout Milele's interior. Each detail contributes to an atmosphere of refined luxury, ensuring an unforgettable experience for discerning guests.



# Accommodation

Milele





Milele encourages guests to revel in al fresco living. Her exterior spaces are complex and highly functional. Unlike any yacht in her size category, Milele houses a custom U-Boat Worx submersible, which is neatly stowed away in her bow. The foredeck is a private retreat, perfect for sunset cocktails or an evening movie.

The enclosed stern is just as complex and has three individually operated sections, allowing it to transform

into a splendid beach club with direct sea access or for a single passerelle to extend to the dock without breaking her muscular exterior design.

Milele has very generous deck space which, thanks to retractable awnings, can be enjoyed throughout the day during all weather conditions.

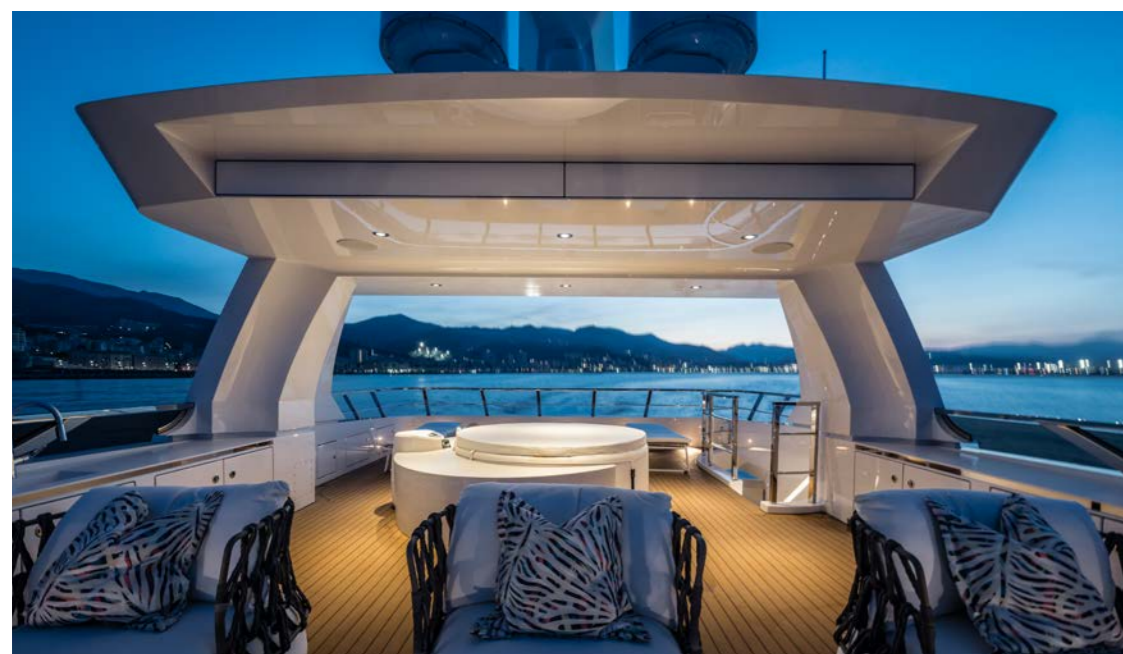
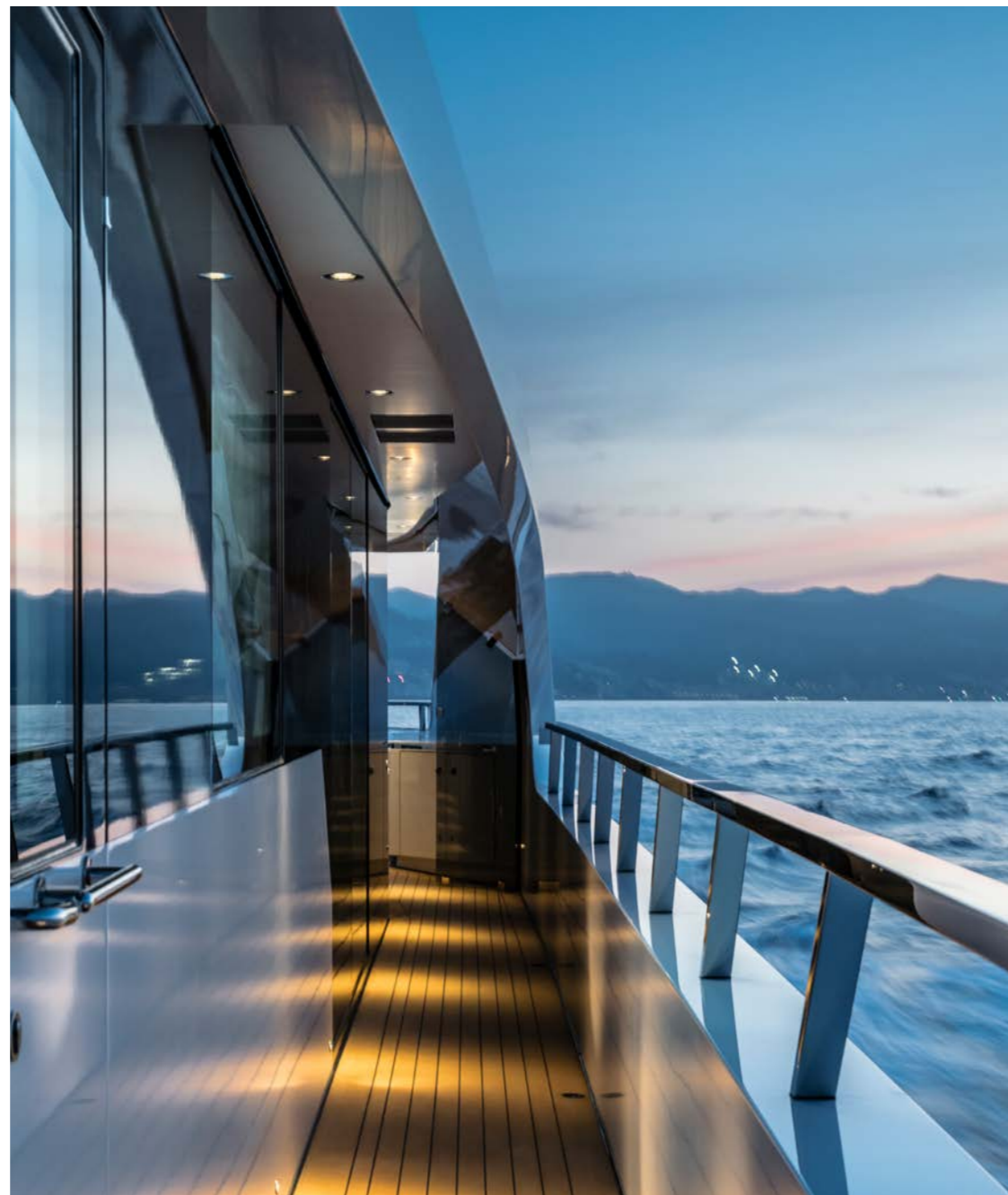
The exterior spaces are packed with loose and fixed furniture allowing guests to both lounge and dine al fresco.





*Outdoor* Outdoor

Milele

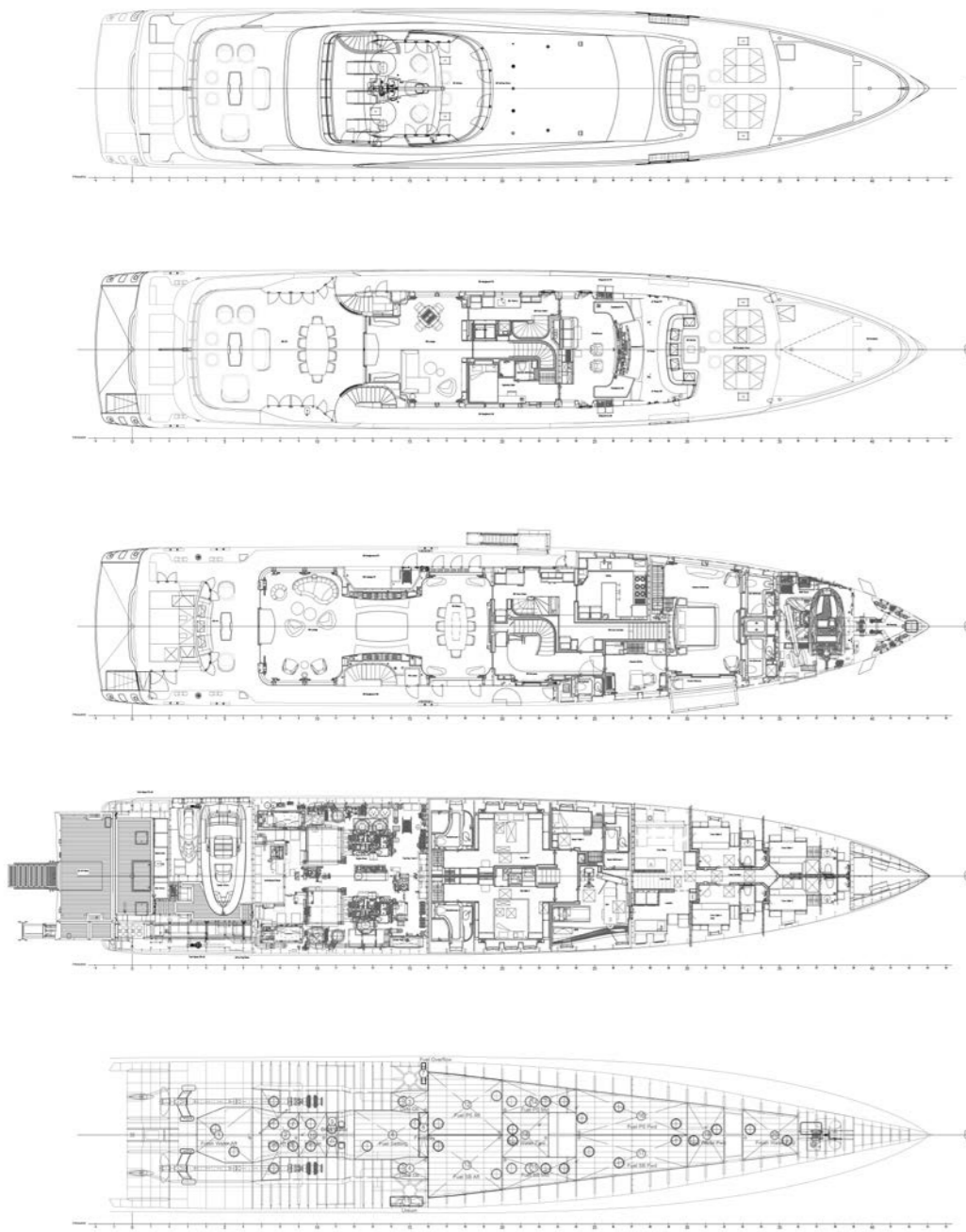


# Specifications

# The Shipyard



## Specifications Milele



Sun Deck  
Bridge Deck  
Main Deck  
Lower Deck  
Tank Deck

Loa	45.2 m / 148'29 ft	Exterior design	Omega Architects, Frank Laupman
Lwl	44.7 m / 147'21 ft	Interior Concept	Omega Architects
Beam overall	8.65 m / 27'56 ft	Interior Design & Styling	Martin Hanff in collaboration with owner
Draft	2.5 m / 8'20 ft	Naval architecture	Van Oossanen Naval Architects
Displacement	320	Stabilisers	Naid 621 with datum control, stabilization at rest and proportional stern thruster control
Gross Tonnage	499	Steering Gear	Damen Marine Components, double rudder system, Ram type
Main engines	2x MTU 12V4000M93L each with an 2580 kW at 2100 rpm plus two 100 kW electrical boost engines	Bow and stern thrusters	Jastram, Type BU 10 F / Max PowerR600
Gearbox	ZF 9000	Fire control and detection	Ultra Fog Watermist and Tyco NOVEC 1230 in engine room
Generators	Two Northern Lights diesel generators: M1066A2 tier 3 rating 115 kW at 1500 rpm and M1066H tier 3 rating 160 kW at 1500 rpm	Entertainment	Icon Connect AV/IT system
Speed	Cruising speed 12 knots / max speed 25,5 knots / hybrid speed 8 knots	Communications	high speed satellite data including wireless network
Range	3,800 nm at 12 knots	Recreational equipment	U- Boat Worx NEMO submarine, 1x Castoldi 19ft Jet tender, 1 ZAR tender ZF-2, 2x Seabob and a Dive Centre
Fuel capacity	54.800 liter / 14.476 gallons		
Fresh water capacity	14.500 liter / 3.830 gallons		
Watermakers	HEM H25 Duplex, 2x 600 ltr. per day		
Construction	Fast Displacement Aluminum Hull with Carbon Hull Vane spoiler, aluminium superstructure		

*We are extremely proud that Milele is nominated as Finalist in five categories of the Boat International Design and Innovation Awards 2024.*

"The owner was heavily involved and made many design revisions that made it to the final concept. Her dropped bulwarks and angular bow were two of the many suggestions put forward by the owner and realised by Omega Architects. The first visualisation presented by Omega was a complex design but by the time the owner and Frank finished all of the intricacies and were both satisfied, Milele became, arguably, one of the most complex 45-metre superyachts" commented Peter Hürzeler, CEO of Ocean Independence.

Ocean Independence negotiated the build contract. In cooperation with Zucker & Partner they oversaw the project throughout her construction.



With a shipbuilding tradition dating back to the 1700s, Hakvoort Shipyard has been in the hands of the same family for more than a century. It was awarded the designation 'Royal' in 2020, a rare distinction that recognised how four generations of Hakvoorts have created a leading yachtbuilder with a first-class reputation for reliability and quality.

Continuous investments have ensured the ongoing modernisation of a yard that has built around 50 luxury superyachts over the past three decades. Their inherent quality has also led to constant recognition by industry peers, with *Lady Marina* (1994), *Freesia* (1998), *Spada* (1999), *Solaia* (2000), *Campbell Bay* (2002), *Saga* (2002), *Perle Bleue* (2007), *My Trust* (2008), *MY Snowbird* (2011), *Pamela V* (2011), *Apostrophe* (2013), *Just J's* (2016), *Soprano* (2017), *Scout* (2019) and *Top Five II* (2021) all being finalists or winners of major awards.

Located in the picturesque port town Monnickendam, just north of Amsterdam, Hakvoort builds yachts up to 65 metres with all joinery taken care of by its in-house furniture company Unlimited Interiors.

< Hakvoort Shipyard, Monnickendam